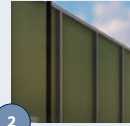




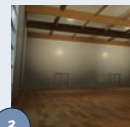
1

Characterised by **laminated wooden beams**



2

Excellent **acoustics**



3

Clear spans up to **36 metres wide**



### The Product

The Flexolution is a multifunctional semi-permanent structure, suitable for a wide range of applications, readily available and quick to install. Based on a 6 metre grid, the widths are clear spans up to 36 metres. The length is unlimited and can be extended in increments of 6 metres. Heights vary depending on the width and application but internal mezzanine floors are possible within higher buildings.



### Design

Consisting of aluminium columns and laminated wooden beams, the structure is fully demountable and relocatable for future use. The walls (120mm thick) have an insulating value of  $R = 5.18 \text{ m}^2\text{K/W}$  and the roof (135mm thick) provides an insulating value of  $R = 3.66 \text{ m}^2\text{K/W}$ . Options include wooden floor and aluminium framed glass panels and doors.

### Features

The Flexolution is a modern temporary building combining strong aesthetic appeal with remarkable solidity and strength, offering many of the features of a permanent building. Including superior acoustic properties, this can be enhanced by fitted perforated wall panels to provide ideal accommodation for sports halls and theatres.

The Neptunus Flexolution complies with the European Building Decree and the criteria set out for energy label A.

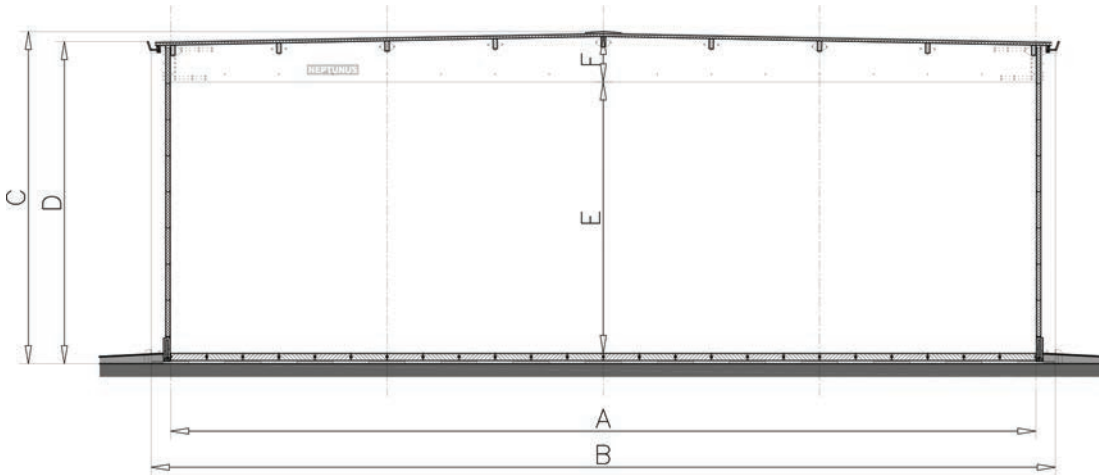
### Applications

Aligned to a basic need for space, the Flexolution can support a business' long-term objectives as well as provide an interim solution to a temporary problem. Available to rent or buy the Flexolution is ideally suited for use as temporary multi-purpose sports halls, gymnasiums, retail outlets, airport terminals, warehouses and indeed anywhere additional, quality space is needed, fast.



structures

neptunus.co.uk



	12 m	18 m	24 m	30 m	36 m
A	1200	1800	2400	3000	3600
B	1308	1908	2508	3108	3708
<i>5 m high</i>					
C	503	507	520	526	532
D	492	492	492	492	492
E	351	351	351	315	279
F	111	116	126	168	210
<i>9 m high</i>					
C	903	907	920	926	932
D	892	892	892	892	892
E	751	751	751	751	679
F	111	116	126	168	210

